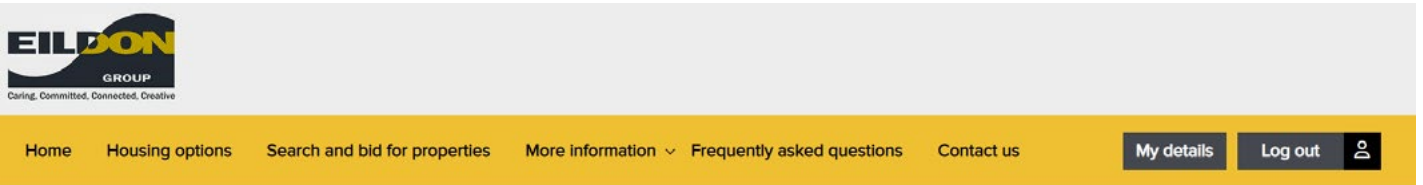


Eildon Homes



How to bid for a property

To be able to bid of a property you have to register for housing.
Once your application is Live, login to your account.
Click 'Search and bid for properties'



Use the search box on the right hand side to search for properties by the number of bedrooms, accessibility, area or rent.

Basic search ⌵

Bedrooms

Accessible housing category

Area

Enter postcode

Distance from Radius

Minimum weekly rent

Maximum weekly rent

Advanced search ⌵

Click on 'Full Property Details' to read more about it.

Hawick Advert Ref : E0000889
1B Lovel Court, HAWICK, TD9 9HF
£ 311.29

Description : No description

Parking : No Floor : Ground floor

When you've found the property you like, click 'Place a Bid' to register your interest and be in with a chance of being allocated.

Eildon Housing Association £ 311.29
1B Lovel Court HAWICK TD9 9HF Hawick ← Back to property list

You will see this message if your bid has been placed:

£ 311.29

← Back to property list

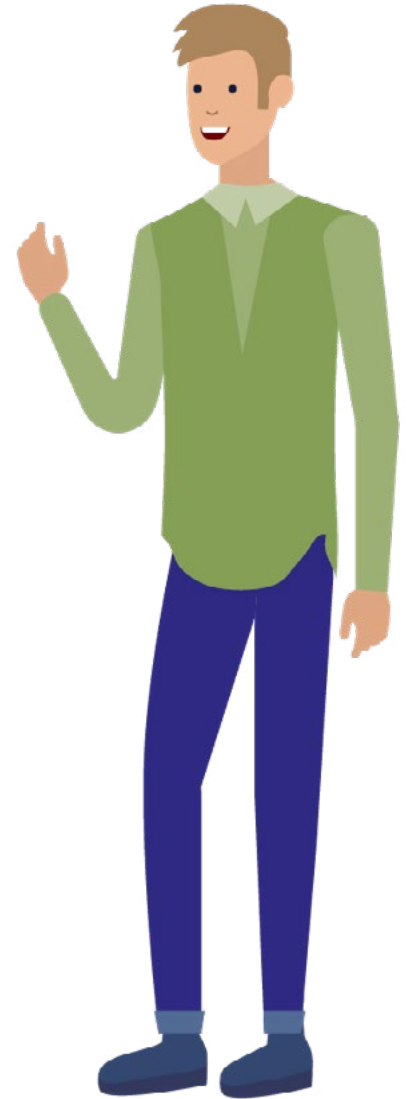
Your bid has been placed

If you are **not eligible** to apply for the property you will see an error message:

£ 427.24

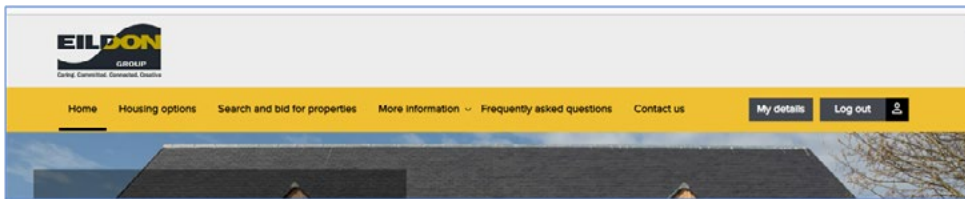
← Back to property list

Insufficient bedroom need

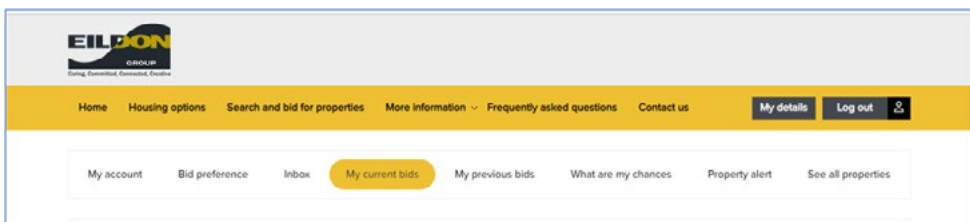


To view your current and previous bids:

Click My details



Here you can view 'My current bids' and 'My previous bids'



Caring, Committed, Connected, Creative

EILDON HOUSING ASSOCIATION – HOW TO CONTACT US



The Weaving Shed, Ettrick Mill,
Dunsdale Road, Selkirk TD7 5EB



Customer Service: 03000 200 217



enquiries@eildon.org.uk



www.eildon.org.uk



www.facebook.com/EildonHousing



Follow us on Twitter – @EildonHousing